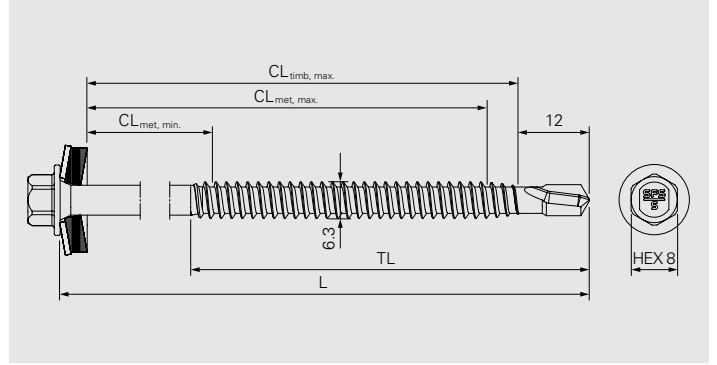
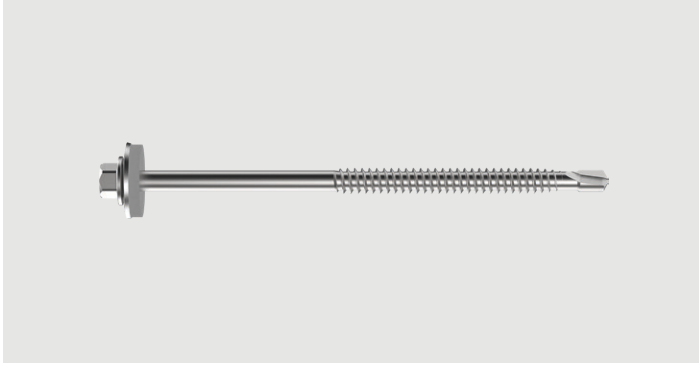


SX5-6.3



Application

Fastening of sandwich panels onto metal profiles (hidden fixing)
 Fastening of sandwich panels onto timber (hidden fixing)
 Fastening of profile sheets onto metal profiles
 Fastening of profile sheets onto timber

Fastener material

Austenitic stainless steel A4, hardened drill point
 Sealing washer: Austenitic stainless steel A4, EPDM-seal

Component 1 (t_1 / t_{NII})	Component 2 (t_{II})	$\Sigma_{max} t_1 + t_{II}$
Sandwich panel ≥ 0.40	Steel 1.0–4.0	5.0
	Steel $2 \times 0.75 - 2 \times 2.70$	6.50
	Timber $l_{ef} \geq 35$	–

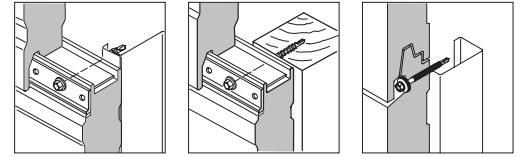
Approvals



Features and Benefits

- Self drilling fastener suitable for installation of profile sheets and sandwich panels
- No top thread ensures accurate seating when fixing through spreader plates for hidden fixing applications
- High quality EPDM sealing washer for long-term weather sealing
- Easy drilling through overlapped metal profiles given by the long drill point
- Economical benefits given by less fasteners needed and installation time saving and / or optimizing subconstruction
- High bending capacity for absorption of thermal expansion of the sandwich panel outer-skin
- High tension resistance achieved by optimized fastener geometry

All measures in mm



Fastener in A4 onto steel and timber

Product code	PU	L	CL _{met}	t _{fix, met}	CL _{timb}	t _{fix, timb}	TL	S16	S19
SX5-S19/A4-6,3×80-A4	100	80	30–55	30–50/54	30–65	–	37	1649399	1649421
SX5-S19/A4-6,3×100-A4		100	40–75	40–70/74	40–85	40–50	47	1649401	1649423
SX5-S19/A4-6,3×120-A4		120	50–95	50–90/94	50–105	50–70	57	1649402	1649424
SX5-S19/A4-6,3×140-A4		140	70–115	70–110/114	70–125	70–90		1649403	1649426
SX5-S19/A4-6,3×160-A4		160	90–135	90–130/134	90–145	90–110	67	1649404	1649428
SX5-S19/A4-6,3×190-A4		190	110–165	110–160/164	110–175	110–140		1649405	1649430
SX5-S19/A4-6,3×220-A4		220	140–195	140–190/194	140–205	140–170	1649406	1649432	
SX5-S19/A4-6,3×250-A4		250	170–225	170–220/224	170–235	170–200	1649408	1649434	

t_{fix, met}: CL_{met, min.} – (CL_{met, max.} – t_{II, max.} or load-bearing clamping length according ETA)/(CL_{met, max.} – t_{II, min.})

t_{fix, timb}: CL_{timb, min.} – (CL_{timb, max.} – t_{Ief, min.})

Fastener in A4 onto steel and timber

Product code	PU	L	CL _{met}	t _{fix, met}	CL _{timb}	t _{fix, timb}	TL	no washer
SX5-6,3×80-A4	100	80	33–58	33–53/57	33–68	–	37	1649390
SX5-6,3×100-A4		100	43–78	43–73/77	43–88	43–53	47	1649391
SX5-6,3×120-A4		120	53–98	53–93/97	53–108	53–73	57	1649392
SX5-6,3×140-A4		140	73–118	73–113/117	73–128	73–93		1649393
SX5-6,3×160-A4		160	93–138	93–133/137	93–148	93–113	67	1649395
SX5-6,3×190-A4		190	113–168	113–163/167	113–178	113–143		1649396
SX5-6,3×220-A4		220	143–198	143–193/197	143–208	143–173	1649397	
SX5-6,3×250-A4		250	173–228	173–223/227	173–238	173–203	1649398	

t_{fix, met}: CL_{met, min.} – (CL_{met, max.} – t_{II, max.} or load-bearing clamping length according ETA)/(CL_{met, max.} – t_{II, min.})



Accessories/Ancillaries

Product code	PU	Drive	Head drive	
E308-¼"-50	1	¼"	HEX8	1646160

All measures in mm

All information is non-binding and without guarantee. Before using the products, all specifications and calculations must be checked by a suitably qualified person and local regulations must be observed. This document is subject to revision. We reserve the right to make technical changes.